

CEMENTS



1
From 2' to 2.5'
GEL PHASE

REMOVE
EXCESS
MATERIAL

From 4' to 5'
FINAL
SETTING



TEMPORARY AND PERMANENT
CEMENTATION

PROVEN, OPTIMISED BONDING

Easy and versatile
cementation solutions
with excellent retention

RECOMMENDED
LIGHT-CURING

IN-MOUTH
SETTING

WORKING TIME



20 MPa

PERMANENT
CEMENTATION

15 MPa

TEMPORARY CEMENT FOR NATURAL TEETH AND IMPLANTS



One cement for TEMPORARY AND PERMANENT CEMENTATION



Temporary
applications



Temporary
and permanent
applications



Dr Jochen Freitag
Brandt-Freitag Clinic
www.brandt-freitag.de
Hamburg, Germany

"I have tried Proclinc Expert Temporary Cement and I found it very easy to remove any excess material."



Dr Juan Alberto Fernández Ruiz
Fernández Clinic
www.oralsurgerytube.com
Dental council registration No.: 07000598

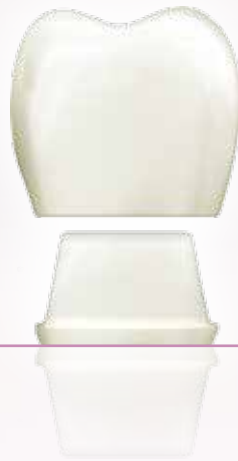
"Around 95% of my implant supported restorations are screw retained, but when I have to cement them, I don't hesitate to use the new Proclinc Expert Temporary Cement which I have complete confidence in."

SELF-ETCHING, SELF-ADHESIVE, DUAL RESIN CEMENT

CLINICALLY
TESTED
LONG-LASTING
RESULTS



Aesthetic and long-lasting results for DEFINITIVE CEMENTATION



Dr Carmen Miñana
Miñana-Peris Clinic
Dental council registration
No.: 46001971

“I have never tried a material
like this before. It is very easy to
handle and fluid, but when it sets
it is extremely hard.”



FOR ALL TYPES OF CEMENTATION ON NATURAL TEETH AND IMPLANTS

CLINICAL CASE STUDY

CEMENTATION OF AN IMPLANT-SUPPORTED CROWN

Easy placement of cement in the restoration

1

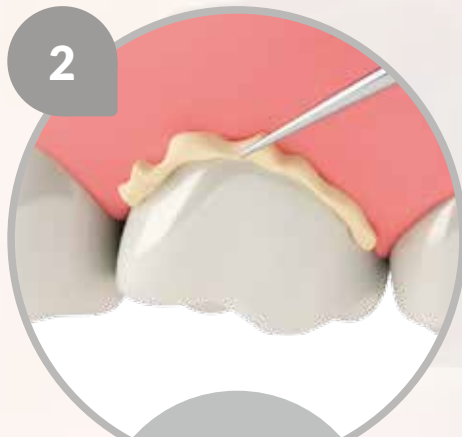


"It has a good consistency and working time. Another positive feature are the mixing tips supplied with the cement, as they are shorter and therefore help save material."

Dr Isabel Naranjo

Easy removal of excess after gel phase

2



"I liked its texture, the ease with which excess can be removed and its highly visible colour."

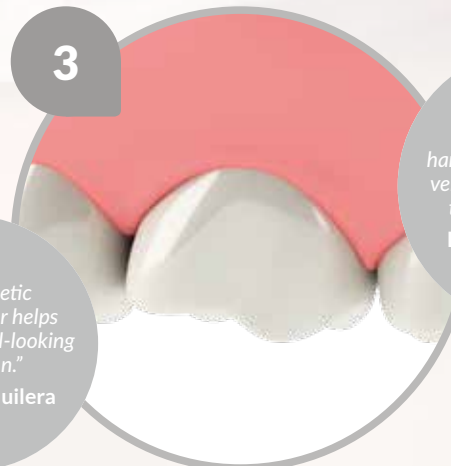
Dr Carmen Miñana

"I really liked this cement because it can be applied in a wide variety of clinical cases, not only for implants but also natural teeth."

Dr Andrea Guilera

Aesthetic results

3



"With regards to handling and results it is very similar to my usual temporary cement."

Dr Carlos Gargallo

"The aesthetic gingival colour helps create a natural-looking restoration."

Dr Andrea Guilera

TEMPORARY CEMENT FOR NATURAL TEETH AND IMPLANTS

**Good retention, easy removal,
high radiopacity and low solubility.**

Eugenol-free, elastic polymer cement indicated for:

- Temporary and permanent cementation of implant-supported crowns and bridges, leaving the possibility of easy removal.
- Temporary cementation of crowns and bridges on natural teeth.

2 SETTING STAGES

From 2' to 2.5'
1
GEL PHASE

REMOVE
EXCESS
MATERIAL

From 4' to 5'
2
FINAL
SETTING

**LOW
SOLUBILITY**
($< 0.04 \text{ mg/cm}^3$):
ensures a good,
stable bond.

**FREE
FROM**

EUGENOL

Facilitates crown removal

CHEMICAL ADHESIVES

ZINC OXIDE

Facilitates clean-up and produces longer-lasting restorations

ESSENTIAL OILS

FLOURIDE

Protects the implant in corrosive environments generated by the presence of fluoride

TASTE

Greater patient satisfaction and comfort

ODOUR

SELF-ETCHING, SELF-ADHESIVE, DUAL RESIN CEMENT

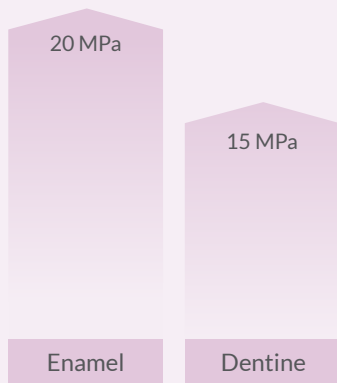
Self-etching and self-adhesive in two shades: dentine and translucent. Long-lasting colour stability and results.

Eugenol-free, self-curing and light-cured resin cement for permanent cementation, with no need for acid etching or adhesive.

FEATURES

BOND STRENGTH

long-lasting and reliable results.



SHADE STABILITY

minimal variation over time.

Proclinic Expert Dual Resin Cement after curing



Proclinic Expert Dual Resin Cement stored in the dark and dried at $37 \pm 2^\circ\text{C}$ for 7 days

Dr Isabel Naranjo

"It is a great cement and I highly recommend it particularly for aesthetic zones. I liked its convenience and aesthetic results."

TIMES

2'
WORKING TIME

3'
IN-MOUTH SETTING

20"
RECOMMENDED LIGHT-CURING

RADIOPACITY

250% AI

which allows long-term follow up.

FLUORIDE RELEASING

minimising the risk of recurrent caries.

ODOURLESS AND FLAVOURLESS

increases patient comfort.

RESTORATIONS



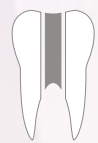
Inlays / onlays / overlays



Crowns / bridges



Partial crowns



Posts

MATERIALS



Metal



Porcelain-fused-to-metal



Composite



Porcelain¹



Alumina and zirconia²



CAD-CAM materials³

1. Requires surface pre-treatment with hydrofluoric acid + silane or a surface conditioner. 2. Requires pre-treatment with a surface conditioner. 3. Requires pre-treatment with a surface conditioner for zirconia or lithium disilicate blocks.

PROFESSIONALS RECOMMEND OUR CEMENTS

CLINICAL CASE STUDY

OVERLAY CEMENTATION

Removal of the temporary restorative material

1



"I used a eugenol-free cement for temporary cementation to facilitate polymerisation of Proclinc Expert Dual Resin Cement."

Dr Andrea Guilera

Fast and easy application of the restoration

2



"I tried this cement and it is very easy to dispense."

Dr Jochen Freitag

"While placing the restoration it is important to allow the cement to flow freely on both sides. As etching and adhesives are not required, you are guaranteed a good result using less components and less stages."

Dr Andrea Guilera

Automix syringe tips designed for universal use

3



"I really liked the mixing tips supplied with the product, as they are shorter and allow you to save more material."

Dr Isabel Naranjo

"For restorations with posts, the XX-fine intra-oral tips are ideal for inserting the product into root canals."

Dr Andrea Guilera

Easy removal of excess product

4



"Excellent handling properties and the working time mean excess material is removed easily."

Dr Isabel Naranjo

PROFESSIONALS RECOMMEND OUR **PROCLINIC EXPERT** CEMENTS FOR EVERY CLINICAL SITUATION

Proclinic Expert Dual Resin cement

- Self-etching, self-adhesive cement for permanent cementation on natural teeth.



1 x 8g syringe, 10 mixing tips, 10 fine, angled, intra-oral tips, 10 XX-fine, angled, intra-oral tips.
Ref. 78552 – dentine shade
Ref. 78553 – translucent shade

Proclinic Expert Temporary Cement

- One cement for both temporary and permanent cementation on natural teeth and implants.



1 x 6g automix syringe + 5 mixing tips.
Ref. 78576

| www.proclinic-products.com | info@proclinic-products.com |

