

CLINICAL CASES

Proclinic Expert Bulk Fill

The fastest restoration

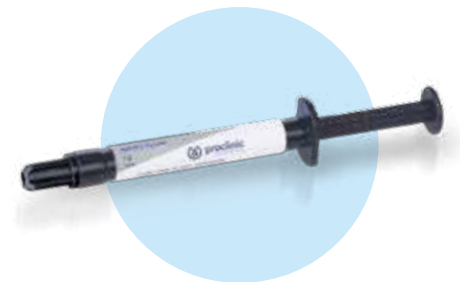
Tooth 36 which is endodontically treated.....



Proclinic Expert Nano Flow

Your most versatile composite

Class V caries in tooth 44

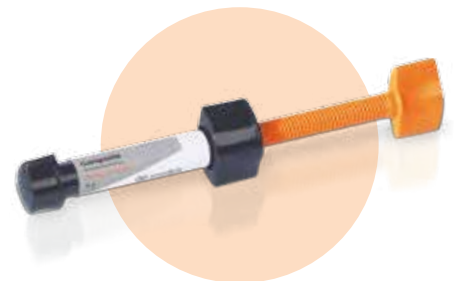


Proclinic Expert Nano Hybrid

Your ideal anterior/posterior composite

Class II caries in tooth 25

Fractures of teeth 11 and 21



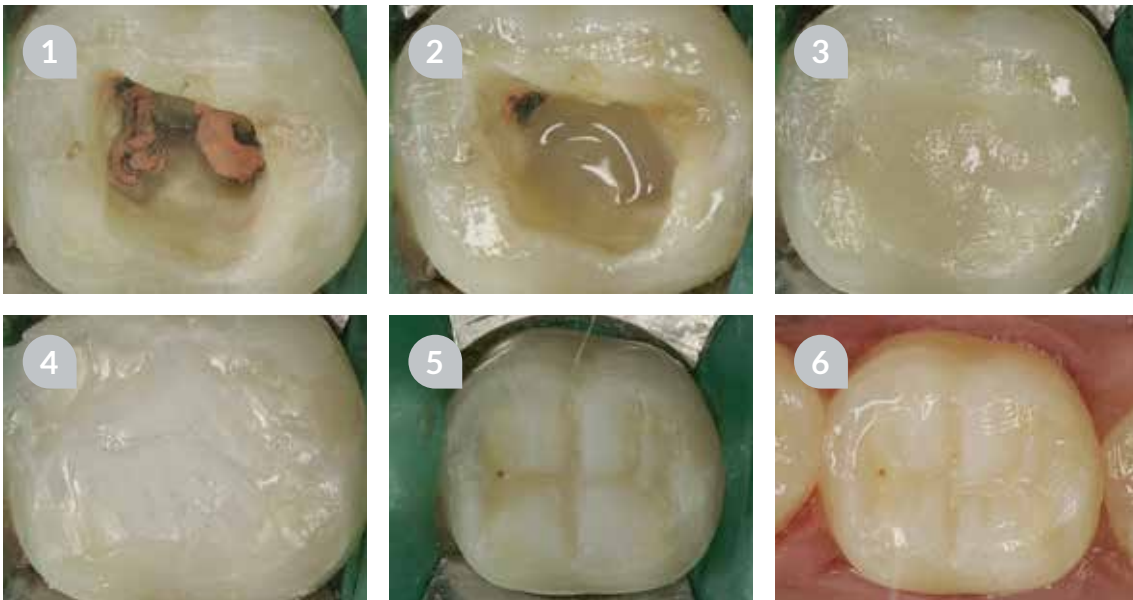
Proclinic Expert Bulk Fill

The fastest restoration



The composite **Proclinic Expert Bulk Fill** is ideal for large restorations.

CLINICAL CASE



- 1 Tooth 36 which is endodontically treated. After rinsing, apply the Proclinic Expert Total Etch Adhesive for immediate sealing of the cavity.
- 2 Application of Proclinic Expert Nano Flow Composite A3,5 as a base. This material behaves ideally as, thanks to its adjusted flowability, it stays where it is applied.
- 3 Fill the cavity with the new Proclinic Expert Bulk Fill Composite in two increments of 2-3mm, light curing for 20 seconds each time. Compaction of the material is simple and easy to do using conventional techniques.
- 4 Application of Nano Hybrid Incisal Composite in a final, single layer to simulate an enamel shade to prevent a monochromatic appearance of the restoration.
- 5 Polishing and shaping occlusal anatomy of the tooth using fine grit, turbine burs.
- 6 Occlusal adjustment, polishing and final gloss of the restoration in the mouth using contra-angle burs at low speed.

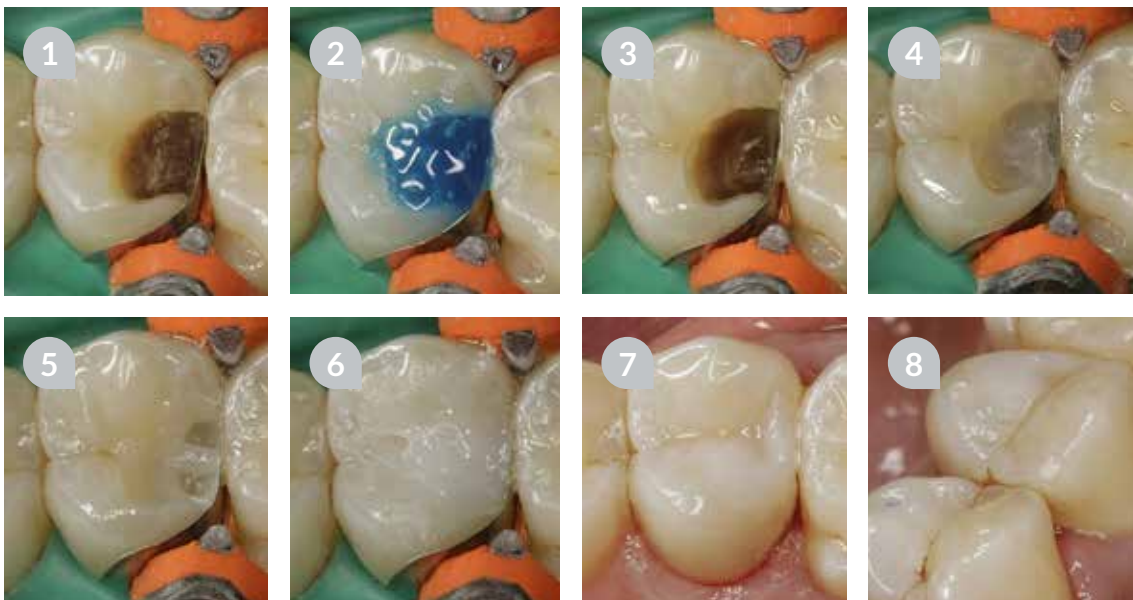
Proclinic Expert Nano Hybrid

Your most versatile
composite



The composite **Proclinic Expert Nano Hybrid** is a perfect material for both anterior and posterior restorations.

CLINICAL CASE

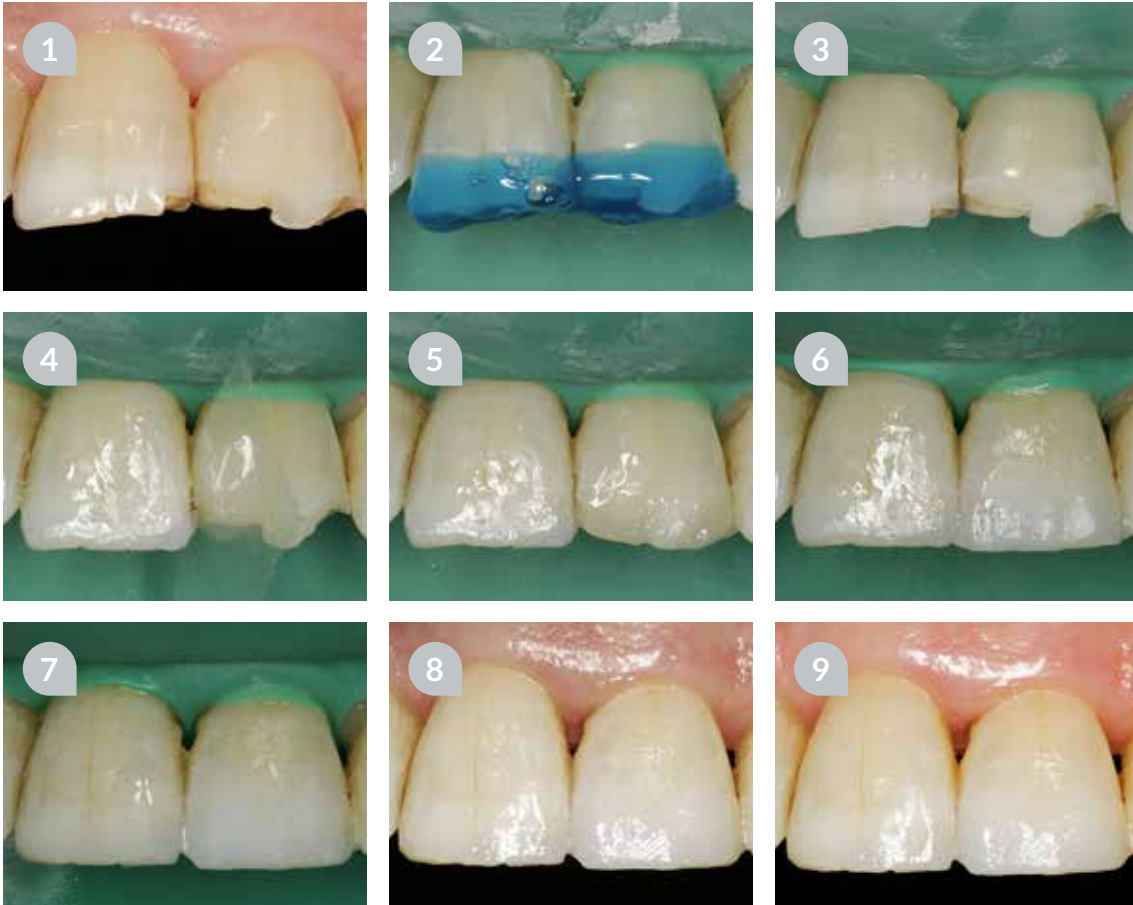


- 1 Penetrating caries on the distal of tooth 25 without pulpal involvement.
- 2 After removal of the carious tissue apply a sectional matrix and etch with Proclinic Acid Etch Gel for 20 seconds.
- 3 Then use Proclinic Expert Total Etch Adhesive for 20 seconds.
- 4 The base of the cavity is lined with Proclinic Expert Nano Flow Composite B2. Polymerize for 20 seconds.
- 5 The contact point is done with Proclinic Expert Nano Hybrid Composite C3.
- 6 We cover it with a top layer of Proclinic Expert Nano Hybrid Incisal Composite.
- 7 Final result after polishing and buffing with rubber cups at low speed.
- 8 Integration of the restoration in the oral cavity.



The composite **Proclinic Expert Nano Hybrid** contains a fluorescent agent that ensures a totally natural appearance of the tooth and is very easy to handle.

CLINICAL CASE



- 1 The patient comes to the surgery with 11 and 21 which have been fractured for a long time. An economic and rapid solution is needed for these teeth. Control X-rays and vitality tests are done on tooth 21. Gingivectomy is recommended for this tooth to improve proportions and simulate the vertical fissure, but the patient is not interested.
- 2 After the preparation, acid etching with Proclinic Acid Etch Gel is carried out for 20 seconds.
- 3 Result after etching with Proclinic Acid Etch Gel.
- 4 Application of a transparent acetate band and placement of Proclinic Expert Total Etch Adhesive on teeth 11 and 21 for 20 seconds. After this, Proclinic Expert Nano Hybrid Incisal Composite is placed on tooth 11.
- 5/6 Application of a layer of Proclinic Expert Nano Hybrid Composite A3 and coverage with an incisal shade.
- 7 Initial polish of the restorations with rubber dam already in place.
- 8 Polish and gloss finish with rubber cups and gloss paste.
- 9 Final result.

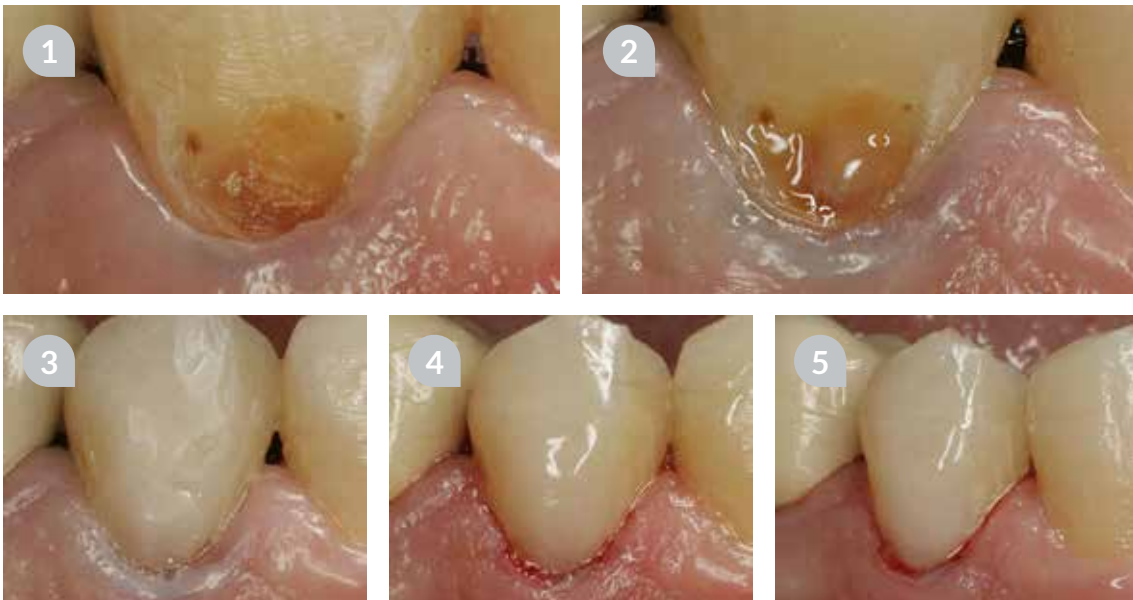
Proclinic Expert Nano Flow

Your most
versatile composite



The composite **Proclinic Expert Nano Flow** guarantees you good results in cervical restorations thanks to its great flexibility.

CLINICAL CASE



- 1/2 The patient comes to the surgery with class V caries in tooth 44. After caries removal and placement of the retraction cord, acid etching is carried out with Proclinic Acid Etch Gel and Proclinic Expert Total Etch Adhesive is applied.
- 3 Application of Proclinic Expert Nano Flow Composite A3,5. Next, Proclinic Expert Nano Hybrid Composite A3,5 is applied and to finish Proclinic Expert Nano Hybrid Incisal Composite.
- 4 Removal of the retraction cord and polishing of the tooth with fine grit, diamond burs and rubber cups at low speed.
- 5 Immediate final result.



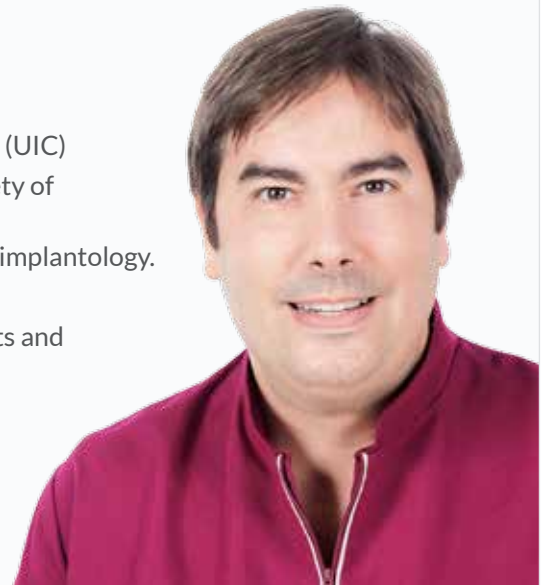
The **Proclinic Expert Bulk Fill Composite** behaves in a very satisfactory manner in the majority of cases. Its main indication could be to form the body of very deep posterior restorations, subsequently covering it with a final layer of a more aesthetic material. It is surprisingly easy to handle and easy to compact into the cavity.

If preferred, it can also be applied directly into the cavity since its polishing capacity and metamerism are excellent. In either method, it is always recommended to also apply **Proclinic Expert Nano Flow Composite** in the base of the cavity.

Dr Carlos Gargallo Gallego

Dr Carlos Gargallo Gallego Dental Clinic Carlos Gargallo

- University dental degree from the Catalunya International University (UIC)
- Post-graduate in advanced aesthetic dentistry from the Catalan Society of Odontostomatology (SCOE)
- Modular course specialisation in periodontal plastic surgery and peri-implantology.
- Modular ROG course and mucogingival surgery
- Dental speaker and professional reference on a national level at events and conferences concerning implantology, radiology and 3D
- **20 years** of advanced aesthetic dentistry.
- **Reference and speaker** In conservative aesthetics: Implantology, Radiology, 3D.



| www.proclinic.es | 900 39 39 39 | info@proclinic-products.com |

