

ACTIVA™ Presto™

Universal Stackable Composite ■ Light Cure

Nature's Magic in a Dental Composite

*The first light cure composite developed
to mimic the properties of natural teeth*

ACTIVA™ Presto is a universal, stackable and shapeable, light cure composite that is strong, durable, wear and fracture resistant, **releases and recharges calcium, phosphate and fluoride**, and is indicated for all classes of cavities.

The Magic is in the Resin

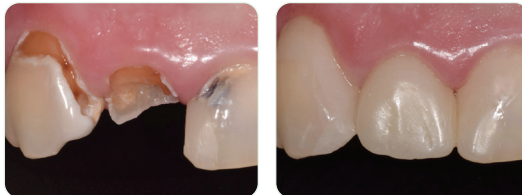
- Highly esthetic, light cure, dentin and enamel replacement material
- Patented rubberized-resin absorbs stress and resists wear, fracture, and chipping, even in thin areas on bevel margins
- Hydrophilic resin facilitates diffusion of bioavailable calcium, phosphate and fluoride ions
- Penetrates and integrates with tooth structure for margin-free adaptation to teeth
- Contains No Bis-GMA, No Bisphenol A, No BPA derivatives

Dr Robert Lowe - US



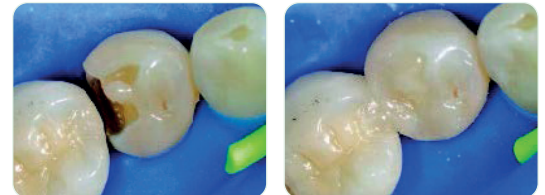
Cervical repair was made with Activa Presto A6 shade. Can you find it?

Dr Les Rykiss - Canada



Severe caries restored with Activa Presto A1 and A2 shade.

Dr Stefano Daniele - Italy



Class II fractured filling replaced with Activa Presto A3 shade.

Clinical Advantages

- Unique stackable, low-flow composite holds shape and does not slump for controlled placement
- Strong, tough, durable, wear and fracture resistant
- Versatile – Universal composite for all classes of cavities
- Presto is available in A1, A2, A3, A3.5, A4, A6, B1, BW (Bleach White). A4 and A6 are cervical shades that are especially useful when treating older patients.
- Highly radiopaque (250%)
- Easy to place, easy to use 1.2mL syringes

Physical Properties

Light cure setting time: **20 ± 2 seconds**
 Depth of light cure: **2.5mm**
 Polymerization shrinkage: **2.1%**
 Fluoride release 1 day: **230 ppm**
 Fluoride release 28 days (cumulative): **940 ppm**
 Solubility: **0.08%**
 Water sorption (1 week): **1.01%**

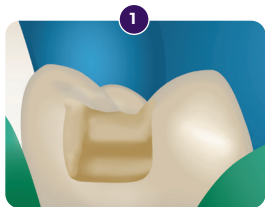
Filler by weight: **70%**
 Flexural modulus: **8 GPa**
 Compressive strength: **327.4 ± 14.8 MPa**
 Diametral tensile strength: **53 MPa ± 2 MPa**
 Deflection at break: **0.8mm**
 Radiopacity: **2.5 AL (250%)**

The Tooth is the Standard

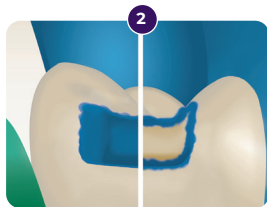
Materials	Esthetic	Moisture-Friendly	High Strength	Releases Calcium, Phosphate	Shock-Absorbent
Tooth Structure	yes	yes	yes	yes	yes
ACTIVA Presto	yes	yes	yes	yes	yes
Composite	yes	no	yes	no	no



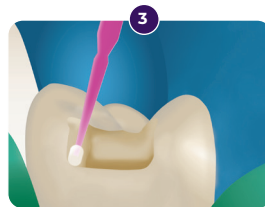
Chairside Guide



1 Prepare cavity
Bevel enamel margins



2 Total or selective etch



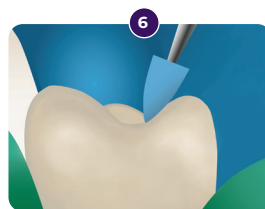
3 Apply bonding agent
per instructions



4 Place Presto in 2.5 mm
increments



5 Light cure after each layer



6 Finish and polish

CODE AND DESCRIPTION

VPF1* - 2 x 2.2 gr (1.2mL) syringes + 20 applicator tips (19 ga)
 (* Specify Shade : A1, A2, A3, A3.5, A4, A6, B1, BW)

