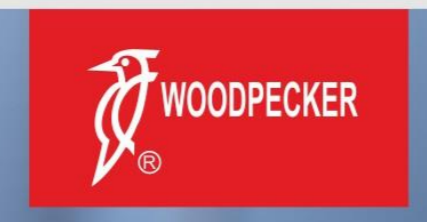




Standard configuration: E96×2, E99×2, E70, E71×10
 High configuration: E96×2, E99×2, E70×2, E71×10, E72×10
 Compatible tips: E70, E71, E72, E73, E74, E93, E95, E96, E97, E98, E99

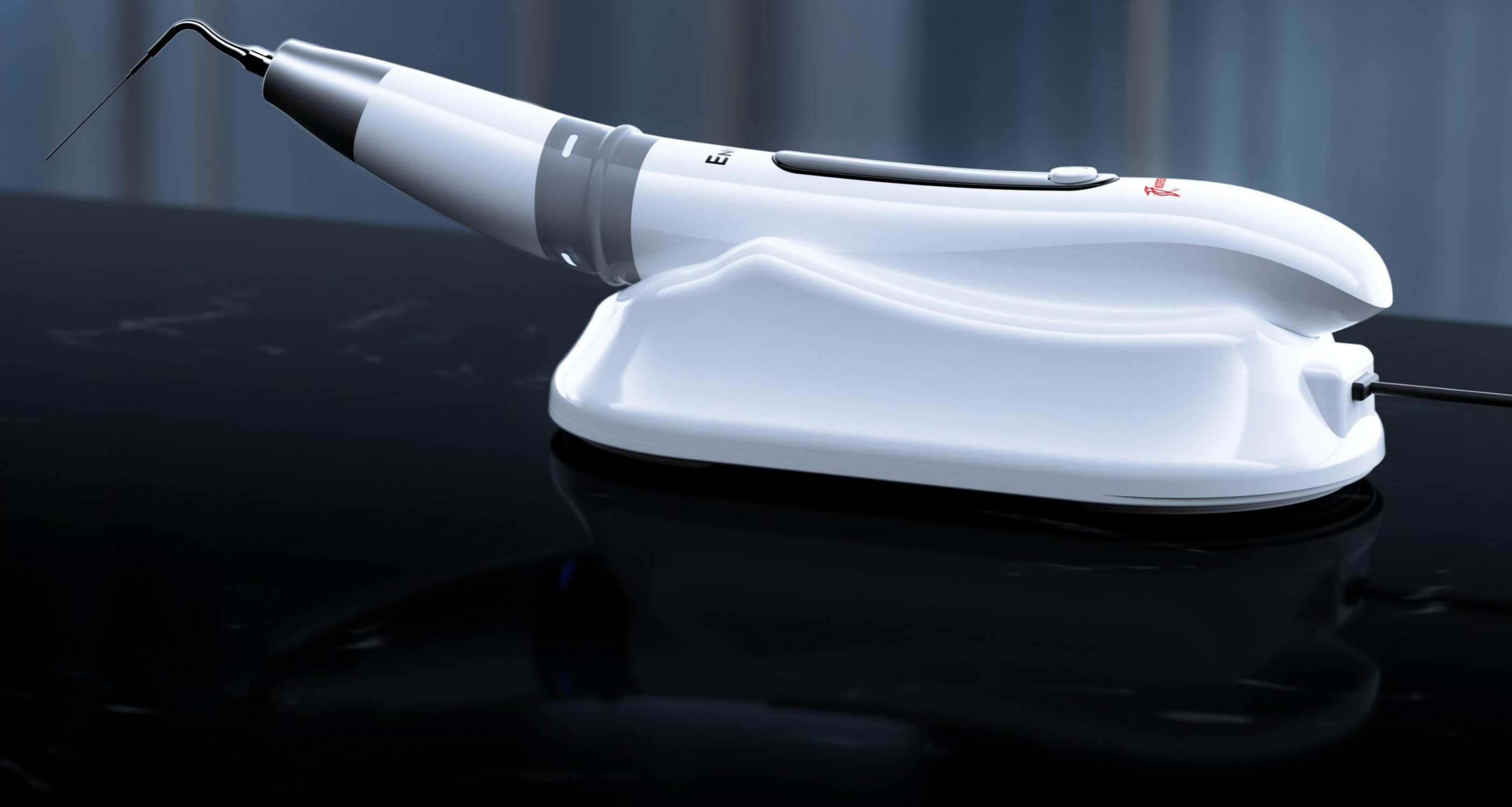
To canal irrigation after the root canal preparation
 E70: Endochuck, used for install E71, E72, E73 or E74 for root canal cleaning or irrigation
 E71, E72, E73, E74: Polymer material without cutting ability
 E93: 20#, taper 1%, tip end length 21.5mm, Ni-Ti
 E95: 20#, taper 2%, tip end length 18mm, Stainless steel
 E96: 20#, taper 2%, tip end length 21mm, Stainless steel
 E97: 20#, taper 2%, tip end length 25mm, Stainless steel
 E98: 25#, taper 2%, tip end length 18.5mm, Titanium alloy
 E99: 25#, taper 2%, tip end length 18.5mm, Titanium alloy

Guilin Woodpecker Medical Instrument Co., Ltd.
 Information Industrial Park, Guilin National High-Tech
 Zone, Guilin, Guangxi, 541004 P.R. China
 Sales Dept.: +86-773-5873196/2350599
 After-sales Service Dept.: 0773-5827898
 E-mail: woodpecker4@glwoodpecker.com
 EC REP Borkstrasse 10-48163 Muenster-Germany
 MedNet EC-Rep GmbH



Ultrasonic Endo Activate Device
Endo 3

• Versatile • Smart • User-friendly



**User-friendly
ring switch button**

Three power levels

Three power levels available: E1, E2, E3,
power from low to high in order

Four time modes

Four time modes optiona:
"10、15、20、--"

The working time in the irrigation mode:

"10s、15s、20s、10min"



**Highly convenient design
More efficient irrigation**

Smart microcomputer control

Microcomputer automatic control is adopted. The high-frequency oscillation signal is generated by the high-frequency oscillation circuit and acts on the handpiece head, making the tip resonate by the ultrasonic vibration stimulation.

**Wireless control
handy to operate**

Magnetic suction contact charging
Wireless operation
Compact and light, easy for irrigation



**Clear LCD screen
easier observation**

Visually display the machine
working state



**User-friendly
ring switch button**

Ring switch button to control the machine
Facilitate the treatment of different angles
and different tooth positions



**STABLE
PERFORMANCE**

Appropriate vibration amplitude

Tips with low vibration and high efficiency
More efficient and reliable irrigation

**Stable performance
Intelligent tracking**

Fully automatic frequency tracking system
Automatically search for best working state

