



Gutta-Smart™ + Conform Fit™  
Cordless Obturation Device    Gutta-Percha

The warm vertical solution  
that flows together



## Optimize your obturation with the complete, low-temperature solution

Fill canals conveniently and reliably with Gutta-Smart™ cordless obturation device and Conform Fit™ gutta-percha master cones. Designed to work together, they feature the same low-temperature flow characteristics and radiopacity for a total warm vertical obturation solution.



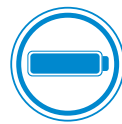
**The efficiency of a total solution.** Paired with the enhanced fit of Conform Fit master cones, Gutta-Smart provides the efficiency you expect in a complete obturation solution.



**Gutta-percha with low-temperature flow.** In both Conform Fit master cones and Gutta-Smart cartridges, the gutta-percha formula flows at a lower temperature, requiring less heat from the handpieces.



**The right fit you can feel.** Conform Fit master cones provide a snug apical fit for accurate tug-back, while the cordless Gutta-Smart handpieces provide precise control and excellent tactile feedback.



**All-day power\*.** A single charge gives you the power to complete an entire day's work.



**Durable, cordless performance.** Well-balanced, lightweight and comfortable to use, both handpieces are cordless for freedom of movement.

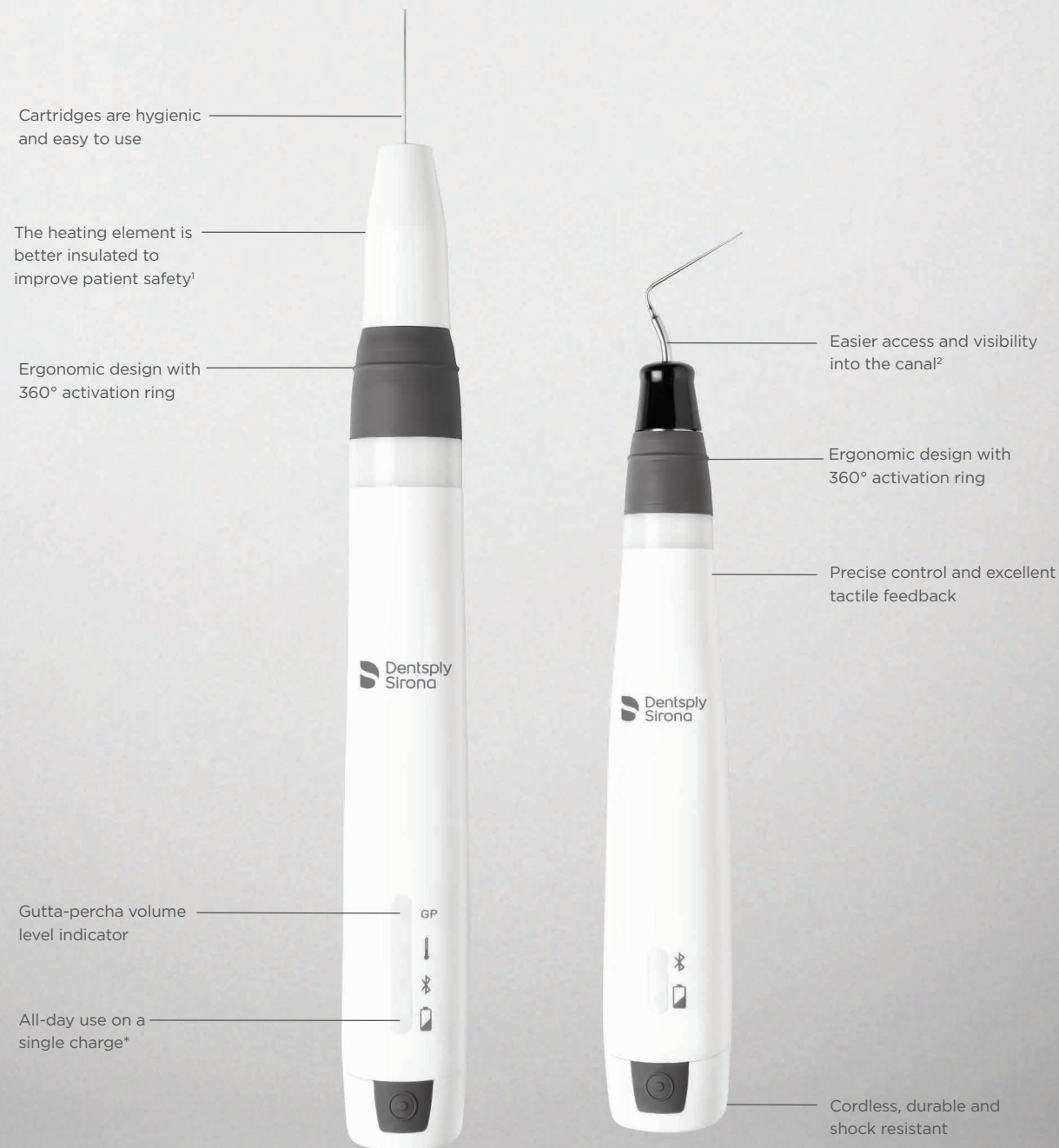
\*The battery capacities of the Flow and Pack handpieces allow for them to be used up to five procedures per day on a single charge.





# The efficiency of a total solution

At Dentsply Sirona, we are committed to developing solutions that empower you to provide better, safer endodontics. Gutta-Smart™ provides convenient and reliable obturation when used with Conform Fit™ as a total solution.



1. As compared to Dentsply Sirona Calamus; data available. 2. As compared to Dentsply Sirona Calamus Dual; data available. \*The battery capacities of the Flow and Pack handpieces allow for them to be used up to five procedures per day on a single charge.



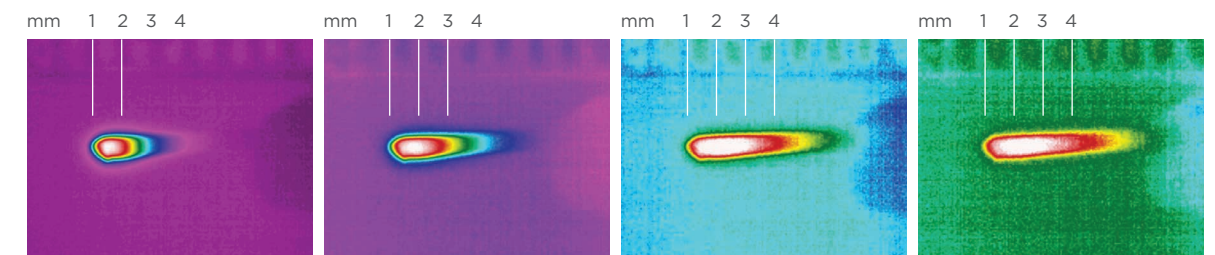
# Gutta-percha with low-temperature flow

The gutta-percha formula offers advanced thermal properties that enable it to flow at a lower temperature — and allow heat transfer up to 4 mm. Its unique formula also offers optimal radiopacity and ease of retreatment.

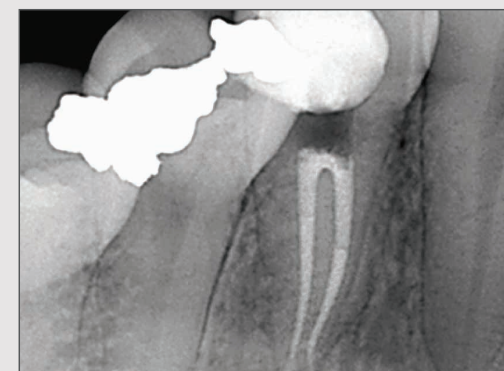
## Advanced thermal properties

Heat transfers up to 4 mm beyond the heat source.

Time-lapse thermal images demonstrate the heat transference within the gutta-percha.<sup>3</sup>



## Consistent fill without radiograph transition lines



Using different formulations of gutta-percha in one case can cause varying degrees of opacity.

Image courtesy of Dr. Phillip Bell, Mooresville, NC



Gutta-Smart™ and Conform Fit™ feature the same advanced gutta-percha for radiographic consistency.

Image courtesy of Dr. Nathaniel Behrents, Fayetteville, AR

3. Source: Internal testing; data available.





## The right fit you can feel

Precision-matched Conform Fit™ master cones deliver a superior apical fit and accurate tug-back. Used together for a total solution, Gutta-Smart™ cartridges provide consistent tactile feedback with easier access and visibility into the canal.<sup>4</sup>

Improved heat transfer and flow at lower temperature

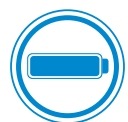
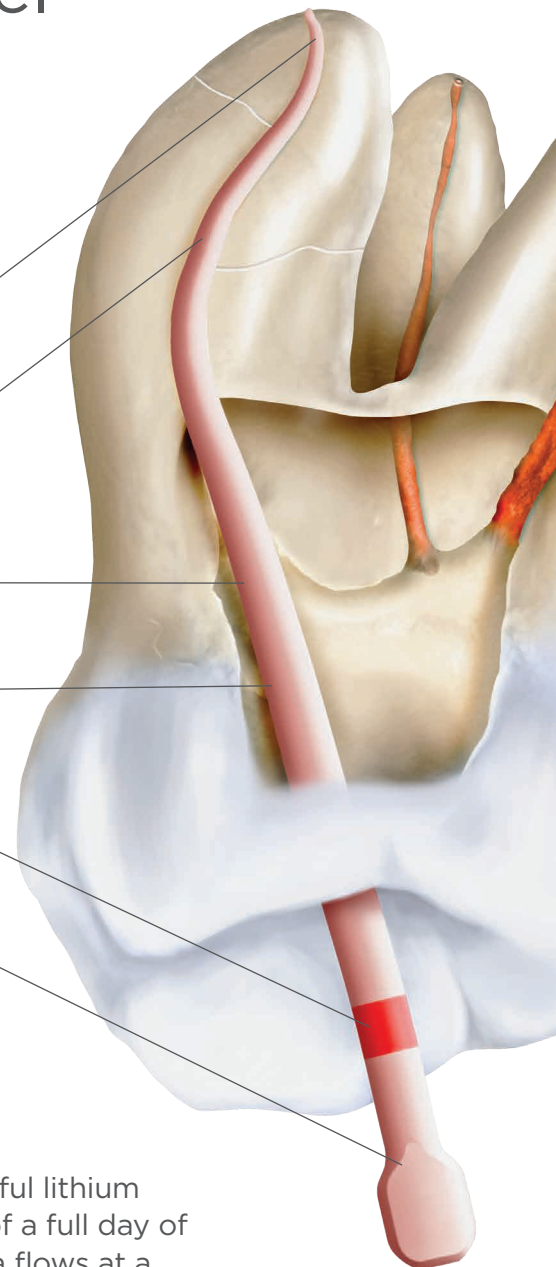
Variable taper for a precise fit and accurate tug-back

Same radiopacity as Gutta-Smart cartridges

Modern manufacturing technique for consistent shape and quality

Part of a system-based solution for simplicity

Convenient tab for easy identification and handling



## All-day power\*

The ergonomic Gutta-Smart handpieces feature a powerful lithium iron phosphate battery that gives you the convenience of a full day of treatments on a single charge. Because the gutta-percha flows at a lower temperature, the handpieces are ready to use in seconds.



## Durable, cordless performance

The cordless handpieces are durable and shock resistant with a lightweight, comfortable feel. Each features a 360° activation ring for freedom of movement. In addition, the heating elements are better insulated for improved patient safety.<sup>5</sup>

4. As compared to Dentsply Sirona Calamus Dual; data available. 5. As compared to Dentsply Sirona Calamus; data available.  
\*The battery capacities of the Flow and Pack handpieces allow for them to be used up to five procedures per day on a single charge.



# Gutta-Smart™ + Conform Fit™

## Product references

### Gutta-Smart Cordless Obturation Device

Gutta-Smart Kit Contents	Item#
	GSMART
1 Flow Handpiece	
1 Pack Handpiece	
1 Base Station	
2 Gutta-Percha Cartridges	
3 Electric Heat Pluggers	
1 Heating Element	
1 Bending Tool	
1 Power Adapter + 4 Universal Plugs	
2 Cleaning Caps	

### Gutta-Smart Conform Fit Gutta-Percha Cartridges

Description	Pack	Item#
20 gauge	10-pack	GSMART20G
23 gauge	10-pack	GSMART23G
25 gauge	10-pack	GSMART25G

### Gutta-Smart Thermal Response Tip

Quantity	Item#
1 TIP	GSTRTIP

### Gutta-Smart Electric Heat Plugger

Description	Pack	Item#
Small (40/.025)	1 ea.	GSEHPSML
Medium (50/.05)	1 ea.	GSEHPMED
Large (60/.06)	1 ea.	GSEHPLRG

### ProTaper Gold® Gutta-Percha Points

Description	Pack	Item#
Yellow F1	60-pack	PTGGPF1
Red F2	60-pack	PTGGPF2
Blue F3	60-pack	PTGGPF3
Black F4	60-pack	PTGGPF4
Yellow F5	60-pack	PTGGPF5
Assorted	60-pack	PTGGPAST

### ProTaper Next® Gutta-Percha Points

Description	Pack	Item#
Red X2	60-pack	PTNGPX2
Blue X3	60-pack	PTNGPX3
Black X4	60-pack	PTNGPX4
Yellow X5	60-pack	PTNGPX5

### ProTaper® Universal Gutta-Percha Points

Description	Pack	Item#
Yellow F1	60-pack	PTUGPF1
Red F2	60-pack	PTUGPF2
Blue F3	60-pack	PTUGPF3
Black F4	60-pack	PTUGPF4
Yellow F5	60-pack	PTUGPF5
Assorted	60-pack	PTUGPAST

### WaveOne® Gold Gutta-Percha Points

Color	Size	Pack	Item#
Yellow	Small	60-pack	WGGPCS
Red	Primary	60-pack	WGGPCP
Green	Medium	60-pack	WGGPCM
White	Large	60-pack	WGGPCL

### TruShape® Gutta-Percha Points

Color	Size	Pack	Item#
Yellow	20/.06V	60-pack	TSGP2006V
Red	25/.06V	60-pack	TSGP2506V
Blue	30/.06V	60-pack	TSGP3006V
Black	40/.06V	60-pack	TSGP4006V

All images are the property of Dentsply Sirona, Inc. unless otherwise noted.

DENTSPLY Tulsa Dental Specialties  
 DENTSPLY International, Inc.  
 608 Rolling Hills Dr.  
 Johnson City, TN 37604  
 dentsplysirona.com  
 Phone: 1-800-662-1202 Fax: 1-800-597-2779

**Dentsply  
Sirona**  
Endodontics