

3M™ Filtek™ One Bulk Fill Restorative

Treatment of fractured composite restoration of first lower molar with 3M™ Filtek™ One Bulk Fill Restorative.

Clinical dentistry and photography by: Dr. Giuseppe Chiodera, Brescia, Italy



Treatment of fractured composite restoration of first lower molar with 3M™ Filtek™ One Bulk Fill Restorative

Clinical dentistry and photography by: Dr. Giuseppe Chiodera, Brescia, Italy

About the Case:

Male patient.

Patient needed treatment due to a fractured composite restoration. Fractured restoration was causing patient significant discomfort.

Challenge:

The complete removal of the fractured composite restoration resulted in a large restoration that needed to be completed in a short amount of time.

Case Study



About the Case

Male patient. Patient needed treatment due to a fractured composite restoration. Fractured restoration was causing patient significant discomfort



Initial situation:

Fractured composite restoration of first lower molar.

Challenge:

The complete removal of the fractured composite restoration resulted in a large restoration that needed to be completed in a short amount of time.

Step 1

Removal of insufficient composite restoration.

The tooth is isolated and the insufficient composite restoration completely removed.



Step 2

Etching.

Tooth is etched with a selective enamel etching technique using 3M™ Scotchbond™ Universal Etchant.



Step 3

Application of adhesive.

3M™ Scotchbond™ Universal Adhesive is applied for 20 seconds.



Step 4

Drying and curing.

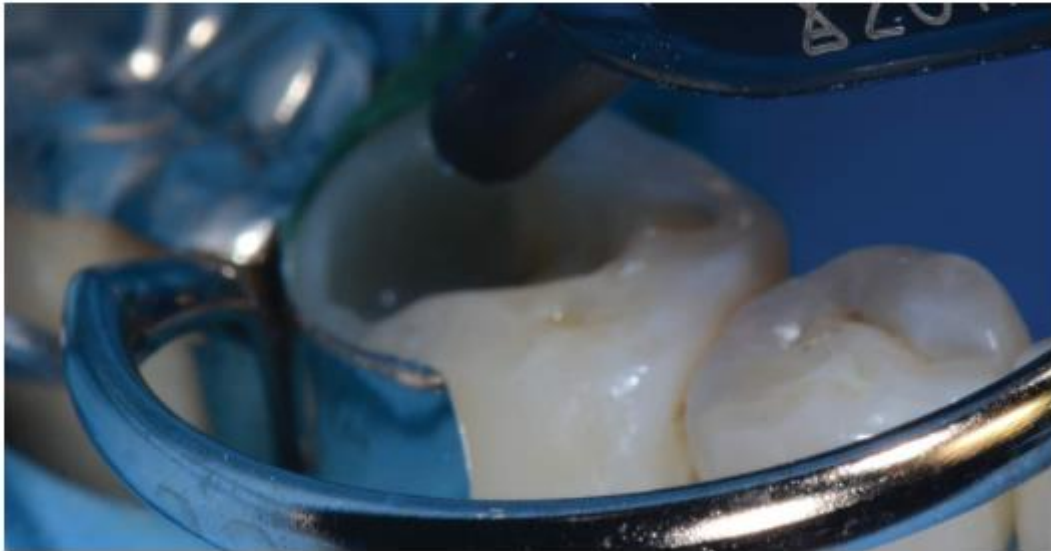
After air drying for approximately 5 seconds, 3M™ Elipar™ DeepCure-S LED Curing Light is used to light cure for 10 seconds.



Step 5

Placement of restorative.

3M™ Filtek™ One Bulk Fill Restorative, shade A3, is placed directly into the cavity and then cured according to the Instructions for Use.



Step 6

Finishing.

3M™ Filtek™ One Bulk Fill Restorative surface finished before final polishing.



Step 7

Pre-polishing.

Pre-polishing of restoration with 3M™ Sof-Lex™ Pre-Polishing Spiral.



Step 8

Polishing.

Polishing with 3M™ Sof-Lex™ Diamond Polishing Spiral to create a final smooth and high-gloss polish for a natural-looking restoration.





Before



After

Final restoration at a recall visit 4 months after placement is natural-looking and esthetic.