

# All inclusive



Bondi

Etch Bond

Easy Bond

Fast Bond

Slow Bond

Mega Bond

XP BOND™

**XPBOND™**  
... for eXtra Performance

Universal Total-Etch Adhesive



For better dentistry

**DENTSPLY**

# ... for eXtra Performance

With the introduction of the first one-bottle-bond in dentistry DENTSPLY set a milestone in modern adhesive technology. Now, based on more than a decade of experience DENTSPLY takes adhesive technology to the next level again. With **XP BOND™** DENTSPLY introduces the first eXtra Performance bond in dentistry.

- > **XP BOND stands for eXtra Performance because it offers bonding excellence, easy handling, technique tolerance and true universal use capabilities.**

For the first time in clinical dentistry a unique, new solvent – tertiary-butanol – is being employed. Tertiary-butanol facilitated the development of an adhesive that offers a long working time and stands out due to its high degree of technique tolerance.

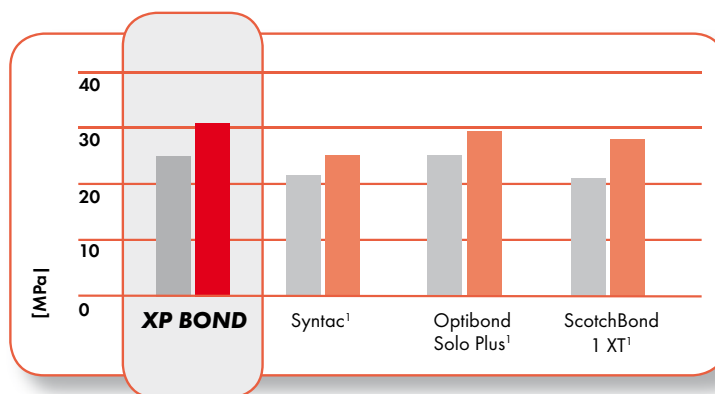


- > **Excellent Bonding Performance is paramount for successful restorations:**

Shear bond strength on enamel and dentine.

■ Dentine  
■ Enamel

M. Latta, USA

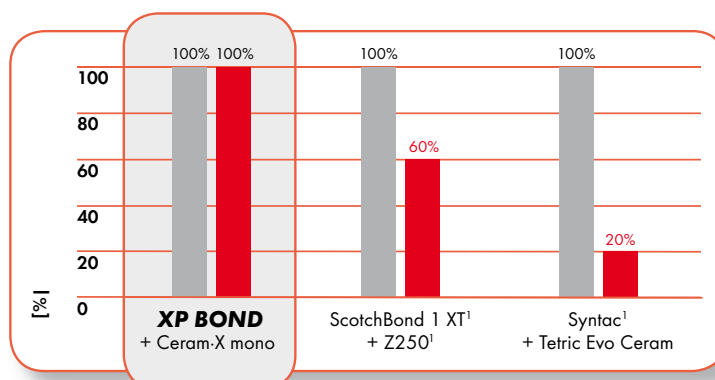


- > **Bond strength is only the first step to evaluate the full potential of a dental adhesive. The following data proves that XP BOND provides a 100% dentine seal, as well:**

Dentine permeability in class V.

■ Dentine tubules sealed (occlusal)  
■ Dentine tubules sealed (gingival)

J. Rosales, Spain



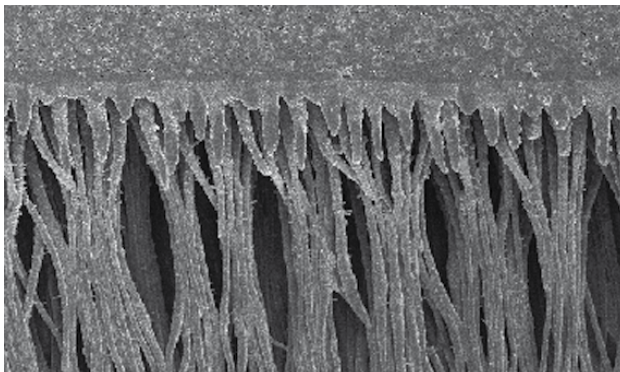
Besides superior bonding results today's dental practitioners also request eXtra Performance with regards to ease of use and technique tolerance.

## > Ease of Use

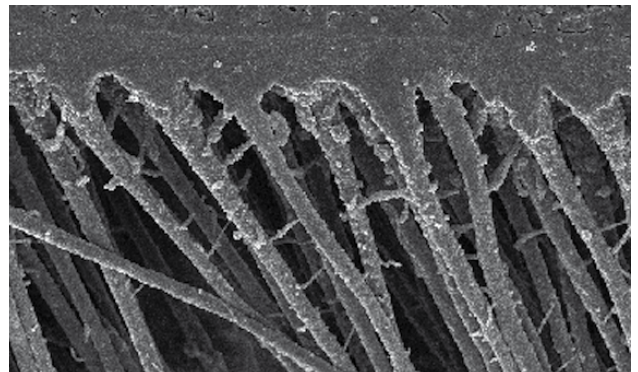
- **One Bottle / One Coat system for all direct restorations**
- **Long working time** (up to 15 minutes out of a closed CliXdish)
- **No active brushing required**
- **Good visibility of adhesive layer**
- **New semi-transparent bottle**

## > Technique Tolerance

SEM of XP BOND on moist dentine.



SEM of XP BOND on dentine dried for 10 sec.



*"The morphology of the hybrid layer when XP BOND was applied on dried dentine was not very distinct from the morphology corresponding to the application of the same adhesive on moist dentine."*

J. Perdigão, USA

## > Universal Use

The list of indications designates XP BOND to be suitable not only for direct, but also for all kinds of indirect restorative techniques, making it a truly universal bonding agent.

**For all indications**

- **light-cure**
- **dual-cure**
- **self-cure<sup>2</sup>**



<sup>1</sup> Syntac® and Tetric Evo Ceram® (Ivoclar Vivadent), Optibond® Solo Plus™ (Kerr), ScotchBond™ 1 XT and Z250 (3M ESPE) are not registered trademarks of DENTSPLY International, Inc.  
<sup>2</sup> In combination with Calibra® esthetic resin cement.

# Packaging Information

## XP BOND™ Refill

- 1 x 5 ml XP BOND™
- 1 x 50 Applicator Tips
- 1 x CliXdish™
- 1 x Directions for use



ReOrder 606.67.281

## XP BOND™ Eco Refill

- 3 x 5 ml XP BOND™
- 2 x 50 Applicator Tips
- 2 x CliXdish™
- 1 x Directions for use



ReOrder 606.67.401

## Self Cure Activator

- 1 x Self Cure Activator (4.5 ml)



ReOrder 634354K

## Applicator Tips

- 50 Applicator Tips

ReOrder 658012



**DENTSPLY DeTREY GmbH**  
De-Trey-Str. 1  
78467 Konstanz  
GERMANY  
www.dentsply.de  
Phone +49 (0) 75 31 5 83-0

**DENTSPLY Limited**  
Hamm Moor Lane  
Addlestone, Weybridge  
Surrey KT15 2SE  
UNITED KINGDOM

For better dentistry

**DENTSPLY**