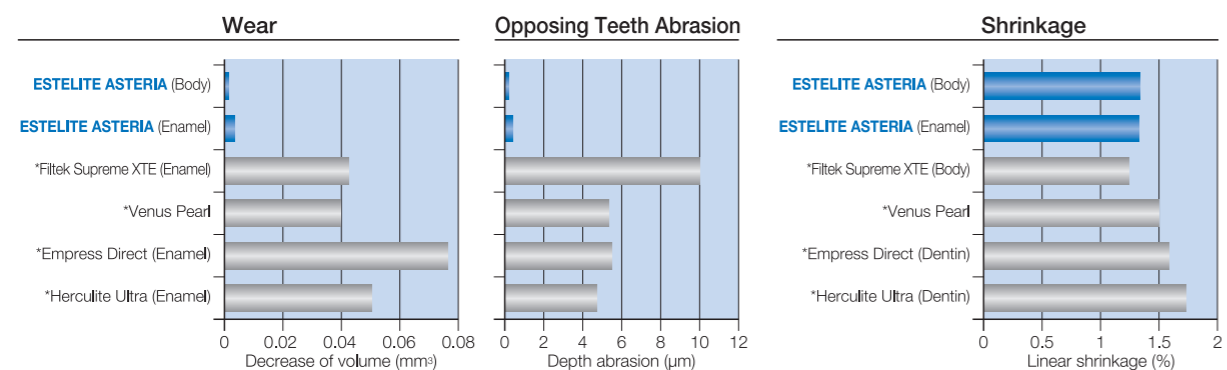


EXCELLENT PHYSICAL PROPERTIES



*Not a registered trademark of Tokuyama Dental
Source : Tokuyama Dental R&D

PRODUCT PACKAGES AVAILABLE



ESTELITE ASTERIA SYRINGE ESSENTIAL KIT

Contents 7 Syringes (2.1mL (4.0g) each)
Body; A1B, A2B, A3B, A3.5B, A4B
Enamel; NE, OcE
Clinical Guide



ESTELITE ASTERIA SYRINGE Refill

Contents 1 Syringe (2.1mL (4.0g))
Available shades: Body A1B, A2B, A3B, A3.5B, A4B, B3B, BL
Enamel NE, OcE, WE, YE, TE



ESTELITE ASTERIA CUSTOM SHADE GUIDE

Contents 15 Shade Guide Handles, Mold, Holder

Custom Shade Guide allows you to build and personalize according to your own preferences. Customize your palette and create the exact shade of your composite.

ESTELITE COLOR KIT (Light-cured Characterizing Material)

Contents 13 Syringes (0.5mL (0.9g) each)
15 Syringe Tips and Caps, 5 Disposable Dishes
1 Light Shield Cover.

ESTELITE COLOR Refill

Contents 1 Syringe (0.5mL (0.9g))
2 Syringe tips and caps
Available shades Clear, White, Blue, Yellow, Gray, Ochre, Dark Brown,
Red, Lavender, Pink Opaque, High Chroma Opaque,
Medium Chroma Opaque, Low Chroma Opaque

BRUSH No.24

Contents 5 Double-Ended Brushes



ESTELITE ASTERIA

Specifications are subject to change without obligation on the part of the Manufacturer.

Manufactured by
Tokuyama Dental Corporation

38-9, Taitou 1-chome, Taitou-ku, Tokyo, Japan
TEL: +81-3-3835-2261 FAX: +81-3-3835-7224
URL: www.tokuyama-dental.com

SIMPLY AESTHETIC

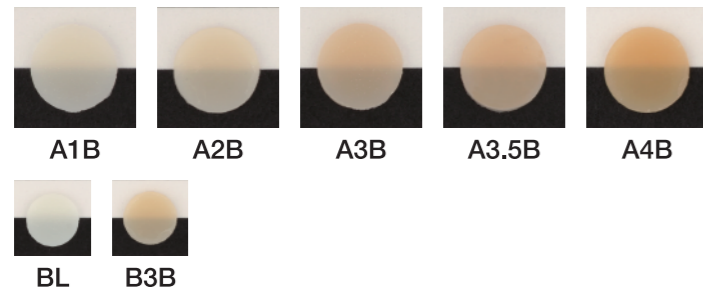
ESTELITE ASTERIA universal composite system is focused on simplified restorative therapy and outstanding aesthetic results.

INVISIBLE MARGINS

ESTELITE ASTERIA introduces a new simplified 2-step layering concept. This comprehensive system is comprised of minimal shades; just 7 Body shades and 5 Enamel shades cover the entire dental shade range.

BODY Shades

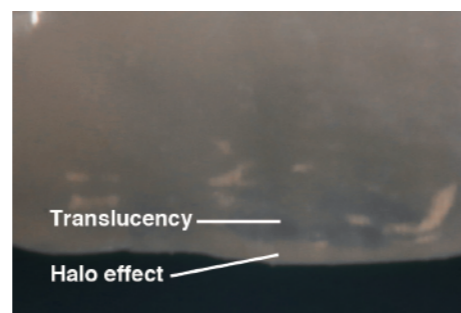
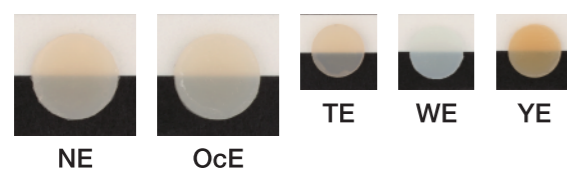
The Body shades have excellent blending ability with less width of margin bevel thanks to their state-of-the-art optical properties. The Body shades provide some translucency with sufficient opacity to avoid shining through without the use of opaque or dentin shades. A1B-A4B shades blend with most natural dentition. The supplemental Body shade BL is recommended for high value bleached teeth and B3B is for yellowish teeth.



Case courtesy of Dr. Noboru Takahashi

ENAMEL Shades

The Enamel shades have compatible translucency as a substitute for natural enamel. The primary use of NE shade is for the anterior teeth and OcE is for the posterior occlusal area. The supplemental Body shade TE is for highly translucent anterior teeth, WE is for whitish enamel and YE is for discolored orangish enamel.



Case courtesy of Dr. Noboru Takahashi

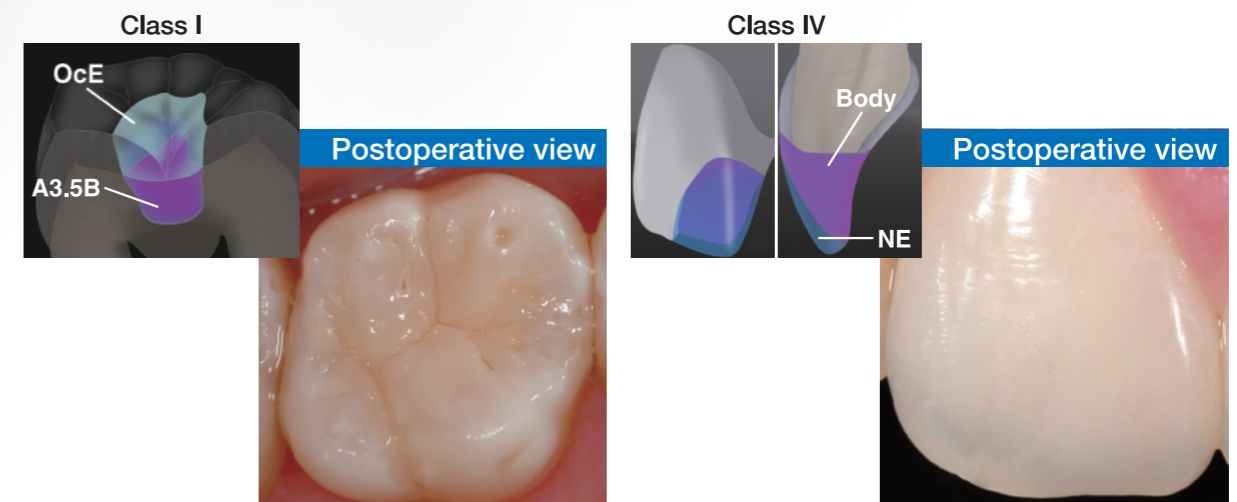
Benefits

- **Outstanding Aesthetics**
Invisible Margins
Superior & Long Lasting Gloss Retention
- **Simplified Layering**
- **Optimal Handling**
Non-Stick & Easy to Sculpt
Ample Working Time
(90sec. under ambient light (10,000 lux))



SIMPLIFIED LAYERING

2-STEP LAYERING CONCEPT



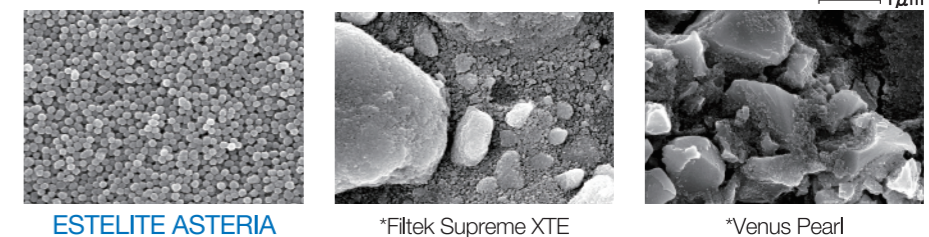
Case courtesy of Dr. Noboru Takahashi

Case courtesy of Dr. Noboru Takahashi

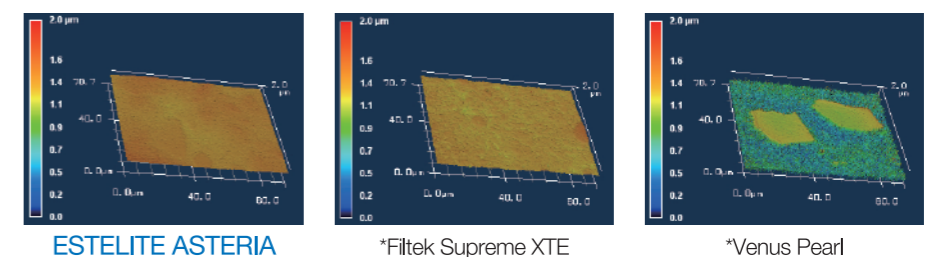
SUPERIOR & LONG LASTING GLOSS

The Supra-Nano Spherical filler in ESTELITE ASTERIA facilitates a very smooth surface with superior gloss that is easily obtained with polishing and is sustained long term.

Filler SEM Images



Gloss Retention (Thermal cycle 10,000 times)



*Not a registered trademark of Tokuyama Dental
Source: Tokuyama Dental R&D