



HYGENIC[®]
DENTAL DAM

A dry path to success...

FIESTA[®] Color Coded Matte Finish Winged and Wingless Clamps



Winged clamps

Combine steps by placing the dam, clamp and frame simultaneously. Once applied, the dam is stretched off the wings of the clamp.

ANTERIOR				MOLAR		
#9*		#W9**		#W3** Small Lower	#7* Lower	#W7** Lower
PREMOLAR						
#2* Large Bicuspids	#W2**	#2A* Bicuspids	#W2A**	#W8** Upper	#4* Small Upper	#W56** Upper & Lower
SERRATED JAWS						
Serrations for improved retention						
				MOLAR - SPECIAL USE		
#12A* Lower Right Molars/ Upper Left Molars		#13A* Lower Left Molars/ Upper Right Molars		For irregularly shaped, structurally compromised or partially erupted molars		
				#8A* Small	#W8A**	#14A* Large
				#W14A**		

* Included in Fiesta 9 Winged Clamp-Pak
** Included in Fiesta 9W Wingless Clamp-Pak

**Two styles.
Two techniques.**

HYGENIC[®] Gloss Finish Winged and Wingless Clamps



Wingless clamps

First the clamp is positioned intra-orally, then the dental dam is stretched over the clamp and tooth. Wingless clamps are designated with a "W" for easy identification.

ANTERIOR			MOLAR			
#9*	#W9	#212	#3 Small Lower	#W3	#7* Lower	#W7
PREMOLAR						
#00 Upper & Lower Bicuspids	#W00	#1* Upper Bicuspids	#8 Upper	#W8 Upper	#4* Small Upper	#W56 Upper & Lower
#2* Large Bicuspids	#W2**	#2A* Bicuspids	#8A* Small	#W8A	#14 Medium	#W14
SERRATED JAWS						
Serrations for improved retention						
#12A* Lower Right Molars/ Upper Left Molars		#13A* Lower Left Molars/ Upper Right Molars		#14A* Large	#W14	
				* Included in System 9 Clamp-Pak		

Brinker Gingival Tissue Retractors

#B1 Lower Molars	#B2 Upper Left Molars	#B3 Upper Right Molars	#B4 Anterior & Canines	#B5 Class V restorations on all teeth	#B6



HYGENIC[®] DENTAL DAM

Lead your patients down the safe & dry path

- Protects the patient from aspiration or ingestion of foreign objects
- Reduces microbial contamination by up to 99%¹
- Helps maintain a non-contaminated field that is free of saliva & blood

Quick and easy placement – even without clamps.



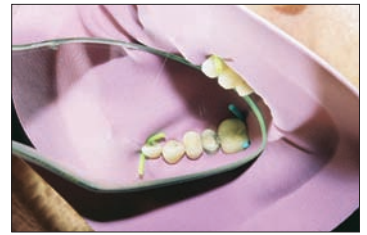
Stretch dental dam over a Hygenic frame and punch out the pre-marked holes.



Insert winged clamp into dam with clamp forceps.



Position clamp with dental dam frame in one easy step.



An alternative to clamps: Wedjets[®] stabilizing cord provide secure and gentle retention.

Maximize clinical success while reducing chair time for many procedures

- Provides greater visibility and access to the work site
- Eliminates interference from patients tongue or cheek
- Protects the soft tissue from contact with burs and instruments
- Time savings of up to 40% to 50%² by eliminating expectorate, patient repositioning and verbal interruptions



Endodontic Therapy



Direct Restorations



Indirect Restorations



Bonding Techniques



Subgingival Restorations

1. Cochran M, Mill C, Sheldrake M. The efficacy of the rubber dam as a barrier to the spread of microorganisms during dental treatment. *J Am Dent Assoc.* 1989; 119: 141-144
2. Christensen GJ. Using rubber dams to boost quality, quantity of restorative services. *J Am Dent Assoc.* 1994; 125: 81-82

The most diverse and complete line of dental dam and accessories

HYGENIC Dental Dam*: High quality, natural rubber latex — strong and tear resistant

HYGENIC offers the most comprehensive dental dam line. Several sizes of pre-cut dam, colors and thicknesses are available to suit your individual needs.

FIESTA® Dental Dam,* with fruit scent for enhanced patient comfort, is available in assorted pastel colors



* These products contain natural rubber latex and may cause allergic reactions

HYGENIC® Non-Latex Dental Dam

- More tear resistant and elastic than latex dam
- Powder Free - each separated with paper
- No offensive odor
- Excellent recovery properties for effective isolation

Three popular non-latex dental dam choices are available:

- Hygenic® non-latex Dental Dam is color reflective and provides excellent tear resistance
- Flexi Dam® non-latex Dental Dam offers greater strength and higher elasticity
- Framed Flexi Dam® Same great benefits of Flexi Dam with a convenient built in frame



HYGENIC®

Non-Latex Dental Dam

6" x 6" & 5" x 5" Medium, Teal Green
15 & 75 (6" x 6" only) sheets/pack



Flexi Dam®

Non-Latex Dental Dam

6" x 6" Medium, Purple or Teal Green
30 sheets/pack



Framed Flexi Dam®

Non-Latex Dental Dam

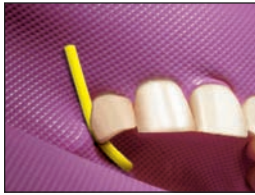
3.91" x 4.12" Medium, Purple
20 framed dams/pack

Maximize clinical success—

“The proper utilization of dry field isolation with rubber dam gives me the opportunity to maximize my clinical skills and material potential. Whether I am using gold, composite or ceramics, the rubber dam provides better access, protection, visualization and dryness.”



Dr. Bruce W. Small
Lawrenceville, NJ, USA



Wedjets® Dental Dam Stabilizing Cord*

- Easy and quick retention
- Alternative to clamps
- Available in latex or non-latex



Dam Frames – Three types to choose from!

- Ostby plastic frame – radiolucent
- U-shaped plastic frame – radiolucent, autoclavable (5" or 6")
- U-shaped metal frame – autoclavable (5" or 6")



Clamp Forceps

Safely position clamps with our light-weight, matte finished forceps.



ORA-SHIELD® Dental Dam Napkins

Applying napkins under the dental dam improves comfort and absorbs moisture.



Dental Dam Stamp and Template

Accurately marks tooth positions.

NEW!

EXTENDED REACH
+1/2" (12mm)



AINSWORTH



Dental Dam Punch

- **NEW** - Extended Reach Punch
Greater reach with easy change daggers
- Ainsworth-style - traditional disc style selector



GET ORGANIZED...

Fiesta® Color Coded Clamps

Each clamp is individually color coded for easy time saving identification. For convenient storage, the 9 color-coded clamps are placed on 9 matching color-coded pegs on the stainless steel organizer.

a dry path to success...



HYGENIC[®] DENTAL DAM

Ordering Information

* These products contain natural rubber latex and may cause allergic reactions.

** Convenience packs available

DENTAL DAM

Ready Cut Dental Dam*

5" x 5" (127 x 127 mm), 52 sheets

Thin: H00523 Light** Medium: H00524 Light**
H02141 Green** H00529 Dark**
H02142 Green** H03529 Blue

Heavy: H00525 Light Extra Heavy: H00526 Light
H00530 Dark H00531 Dark
H02143 Green H02144 Green
H07314 Blue

6" x 6" (152 x 152 mm), 36 sheets

Thin: H00533 Light** Medium: H00534 Light**
H00538 Dark H00539 Dark**
H02146 Green** H02147 Green**
H03530 Blue

Heavy: H00535 Light Extra Heavy: H00536 Light
H00540 Dark H00541 Dark
H02148 Green H02149 Green
H07315 Blue

Fiesta® Dental Dam*

5" x 5" (127 x 127 mm), 52 sheets

Thin: H04640 Assorted colors
Medium: H04641 Assorted colors**
Heavy: H04643 Assorted colors

6" x 6" (152 x 152 mm), 36 sheets

Thin: H04639 Assorted colors
Medium: H04642 Assorted colors**
Heavy: H04644 Assorted colors

Flexi Dam® Non-Latex Dental Dam

6" x 6" (152x152mm) Medium, Purple
H09945 30 sheets

6" x 6" (152x152mm) Medium, Teal Green

H09946 30 sheets

Framed Flexi Dam® Non-Latex Dental Dam

3.91" x 4.12" (100x105mm) Medium, Purple
H00750 20 sheets

Hygenic® Non-Latex Dental Dam

6" x 6" (152 x 152 mm) Medium, Teal Green

H09105 15 Sheets

H09106 75 Sheets

5" x 5" (127 x 127 mm) Medium, Teal Green

H09928 15 Sheets

Roll Dam*

5" x 22' roll (1 sq. yd.) (127 mm x approx. 6.7 m)

Thin: H00503 Light Medium: H00504 Light

6" x 18' roll (1 sq. yd.) (152 mm x approx. 5.5 m)

Light: H02174 Green Medium: H00514 Light
H00519 Dark
H02175 Green

Extra Heavy: H02177 Green

DENTAL DAM KITS

Dental Dam Starter Kit with Winged Clamps (complete)

H02778 36 sheets Dental Dam* 6x6 (Green, Medium),
6" (152mm) frame (H01414), Fiesta 9 Color Coded
Clamp-Pak, Template, Wedjets, Punch, Forceps

H02782 same contents as H02778 in plastic carrying case

Dental Dam Starter Kit with Wingless Clamps (complete)

H02790 36 sheets Dental Dam* 6x6 (Green, Medium),
6" (152 mm) frame (H01414), Fiesta 9W Color Coded
Clamp-Pak, Template, Wedjets, Punch, Forceps

Dental Dam Kit with Winged Clamps (w/o punch & forceps)

H02779 36 sheets Dental Dam* 6x6 (Green, Medium),
6" (152 mm) frame (H01414), Fiesta 9 Color Coded
Clamp-Pak, Template, Wedjets

Dental Dam Kit with Wingless Clamps (w/o punch & forceps)

H02792 36 sheets Dental Dam* 6x6 (Green, Medium),
6" (152 mm) frame (H01414), Fiesta 9W Color Coded
Clamp-Pak, Template, Wedjets

Dental Dam Kit with Metal Frame (with wingless clamps)

H02793 36 sheets Dental Dam* 6x6 (Green Medium),
6" (152 mm) metal frame (H07083), Fiesta 9W Color
Coded Clamp-Pak, Template, Wedjets

Dental Dam Kit with Brinker Clamps (Gloss Finish Clamps)

H09715 52 sheets Dental Dam* 5x5 (Green, Medium), 5"
(127 mm) plastic frame (H01416), Brinker Clamp-Pak,
Template, Wedjets, Punch, Forceps

DENTAL DAM ACCESSORIES

Wedjets® Stabilizing Cord

H08040 Latex, Extra Small, Blue, 7 ft. (2.1 m)*

H06522 Latex, Small, Yellow, 7 ft. (2.1 m)*

H06523 Latex, Large, Orange, 7 ft. (2.1 m)*

H06524 Non-latex, Small, Lime Green, 7 ft. (2.1 m)

H06525 Non-Latex, Large, Aqua Blue, 7 ft. (2.1 m)

Dental Dam Frame

H01416 Plastic, 5" (127 mm)

H01414 Plastic, 6" (152 mm)

H00560 Ostby frame, plastic, 6" (152 mm)

H07082 Metal, 5" (127 mm)

H07083 Metal, 6" (152 mm)

Dental Dam Forceps

H01252 Stainless steel

Dental Dam Punch

H01251 Ainsworth Style

H01253 Extended Reach Punch

Ora-Shield® Dental Dam Napkins

50 pieces

H01415 fits Frame size 5" (127 mm) and 6" (152 mm)

H00841 fits Holder size

Dental Dam Stamp

H01442 5" x 5" (127 x 127 mm)

H01443 6" x 6" (152 x 152 mm)

Dental Dam Template

H01440 5" x 5" (127 x 127 mm)

H01441 6" x 6" (152 x 152 mm)

DENTAL DAM CLAMPS (GLOSS AND MATTE FINISH)

Clamp Paks (Gloss Finish, Stainless Steel)

H02701 System-9 Clamp-Pak (winged)
Size: 1, 2, 4, 7, 8A, 9, 12A, 13A, 14A

H01054 Brinker Clamp-Pak
Size: B1, B2, B3, B4, B5, B6

Clamp Paks (Matte Finish, Color Coded, Stainless Steel)

H09966 Fiesta® 9 Color Coded Clamp-Pak (winged)
Size: 2, 2A, 4, 7, 8A, 9, 12A, 13A, 14A, & organizer

H02801 Fiesta® 9W Color Coded Clamp-Pak (wingless)
Size: W2, W2A, W3, W7, W8, W8A, W9, W14A, W56
& organizer

H09956 Fiesta® Color Coded Clamp Organizer

Hygenic® Gloss Winged Clamps

H02762	#00	H02760	#8
H02703	#1	H02759	#8A
H02761	#2	H02763	#9
H05688	#2A	H02706	#12A (serrated jaws)
H05689	#3	H02705	#13A (serrated jaws)
H02704	#4	H05690	#14
H02758	#7	H02757	#14A

Hygenic Gloss Wingless Clamps

H07792	#212	H02767	#W8
H02769	#W00	H02766	#W8A
H02768	#W2	H02770	#W9
H02775	#W2A	H02774	#W14
H03814	#W3	H02764	#W14A
H02765	#W7	H03815	#W56

Fiesta Color Coded Matte Finish Clamps (winged)

H09957	#2	H09962	#9
H09958	#2A	H09963	#12A (serrated jaws)
H09959	#4	H09964	#13A (serrated jaws)
H09960	#7	H09965	#14A
H09961	#8A		

Fiesta Color Coded Matte Finish Clamps (wingless)

H02794	#W2	H02799	#W8A
H02795	#W2A	H02800	#W9
H02796	#W3	H02802	#W14A
H02797	#W7	H02803	#W56
H02798	#W8		

Hygenic Gloss Brinker Tissue-Retractors Clamps

H01048	B1	H01051	B4
H01049	B2	H01052	B5
H01050	B3	H01053	B6

DAM-IT, IT'S EASY!sm

EDUCATIONAL PROGRAMS

Two Ways to Earn Valuable CE Credit! THE SELF-STUDY PROGRAM (2 CE UNITS):

- Features VHS Video/CD-ROM Companion Handbook
- Meets national/state mandated CE requirements

THE HANDS-ON SEMINARS (3-6 CE UNITS):

- Features hands-on participation
- Learn dam application techniques for esthetic (bonding) procedures

For more information or a copy of our free pamphlet that details the Dam-It, It's Easy!sm Educational Programs, call our Customer Service Department toll-free at 1-800-221-3046, ext. 8998.

Coltène/Whaledent Inc.
235 Ascot Parkway
Cuyahoga Falls, OH 44223 / USA
Tel. USA & Canada 1 800 221 3046
+1 330 916 8800
Fax +1 330 916 7077
info@coltenewhaledent.com

Coltène/Whaledent AG
Feldwiesenstrasse 20
9450 Altstätten / Switzerland
Tel. +41 (0) 71 757 53 00
Fax +41 (0) 71 757 53 01
office@coltenewhaledent.ch

Authorized EU Representative:
Coltène/Whaledent GmbH + Co. KG
Raiffeisenstrasse 30
89129 Langenau / Germany
Tel. +49 (0) 7345 805 0
Fax +49 (0) 7345 805 201
productinfo@coltenewhaledent.de

Coltène/Whaledent website:
<http://www.coltenewhaledent.com>

